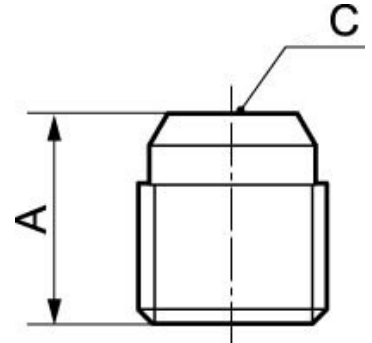


## FITTINGS - PLUGS THREADED LINERS - Y PIECES

### Hollow parallel male plug - A20



#### Min / Max operating pressure

0 / 15 bar

Part number	Male thread	Dim. A (mm)	Dim. C (mm)
A20 18	G1/8	8	5
A20 14	G1/4	10	6
A20 38	G3/8	10	8
A20 12	G1/2	12	10